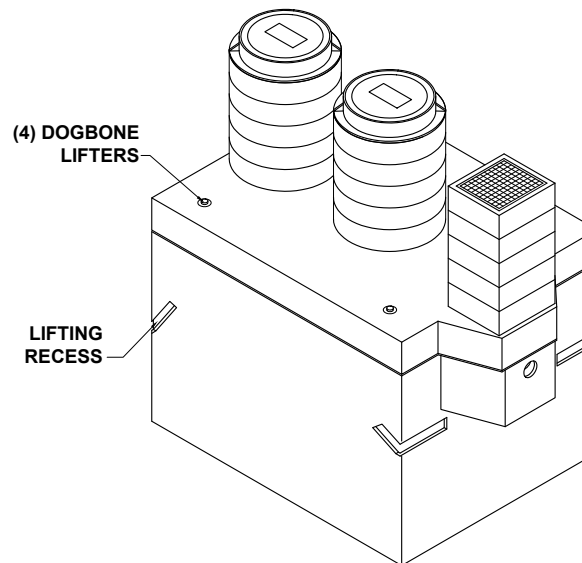
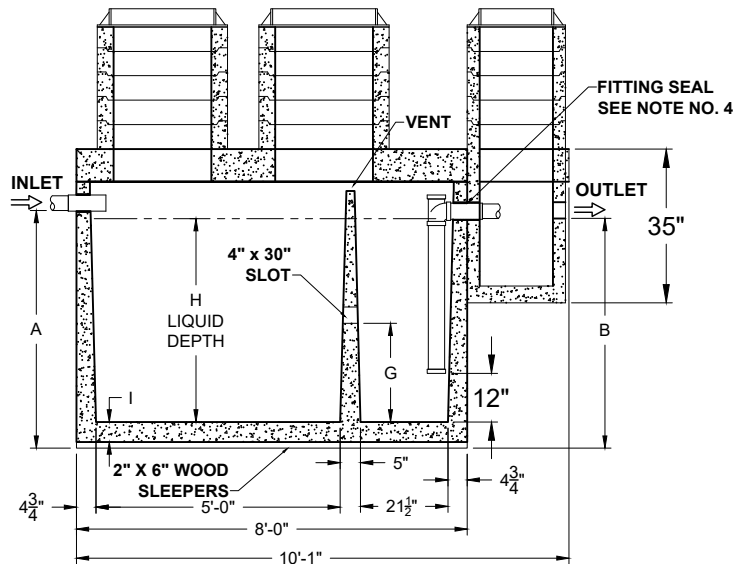


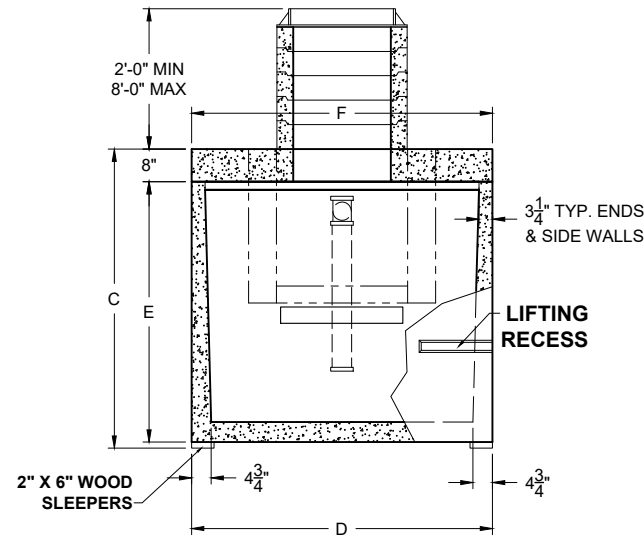
PLAN VIEW



ISOMETRIC VIEW



SECTION THRU "A-A"



SECTION THRU "B-B"

(2) COMPARTMENTS

ALL DIMENSIONS ARE IN INCHES & WEIGHTS IN LBS - (RISER WT. NOT INCLUDED)										EXCAVATION SPECIFICATIONS				
MODEL	A	B	C	D	E	F	G	H	I	APPROX. WEIGHT	LENGTH	WIDTH	BELOW INLET	TANK HEIGHT
PC SG-1-750-HD	40	38	55	74	45	74	19 3/4	31 1/2	4 1/2	12,805	13'-0"	9'-2"	3'-4"	4'-7"
PC SG-1-1000-HD	50	48	65	74	55	74	24 3/4	41 1/2	4 1/2	14,160	13'-0"	9'-2"	4'-2"	5'-5"
PC SG-1-1250-HD	59	57	74	74	64	74	29 1/4	50 1/2	4 1/2	15,375	13'-0"	9'-2"	4'-11"	6'-2"
PC SG-1-1500-HD	62 1/2	60 1/2	77 1/2	85	67 1/2	85	30 3/4	53 1/2	5	17,720	13'-0"	10'-1"	5'-2 1/2"	6'-5 1/2"

Pro-Cast
PRODUCTS INC.

27417 E. Third St., Highland, CA 92346
909-793-7602 phone 909-793-1283 fax
www.procastproducts.com

PRODUCT NAME:
SAND & GREASE INTERCEPTOR

DESCRIPTION:
WITH TWO COMPARTMENTS
750 TO 1500 GALLONS

DESIGN SPECIFICATIONS
DESIGN LOAD: H-20 TRAFFIC RATED

WITH DRY SOIL CONDITIONS (WATER LEVEL BELOW TANK). SUITABLE SUB-BASE BEDDED WITH GRANULAR MATERIAL SHALL BE PREPARED TO HANDLE ANTICIPATED LOADS. FOR COMPLETE DESIGN AND PRODUCT INFORMATION, PLEASE CONTACT PRO-CAST PRODUCTS.

PRO-CAST PRODUCTS RESERVES THE RIGHT TO MAKE CHANGES TO PRODUCT DESIGN AND/OR DIMENSIONS WITHOUT NOTICE. PLEASE CONTACT PRO-CAST PRODUCTS WHENEVER NECESSARY FOR CONFIRMATION OR ADVICE ON PRODUCT DESIGN.

NOTES:
1. NOT USED
2. REFER TO SPECIFICATION SHEET NOS. S-251 & S-252
3. REFER TO SPECIFICATION SHEET NO. S-201
4. REFER TO SPECIFICATION SHEET NO. S-250

SCALE: DO NOT SCALE
DRAWN BY: TPC 12.20.2024
REVISED BY:
CHECKED BY:

DRAWING NO.
SG-001